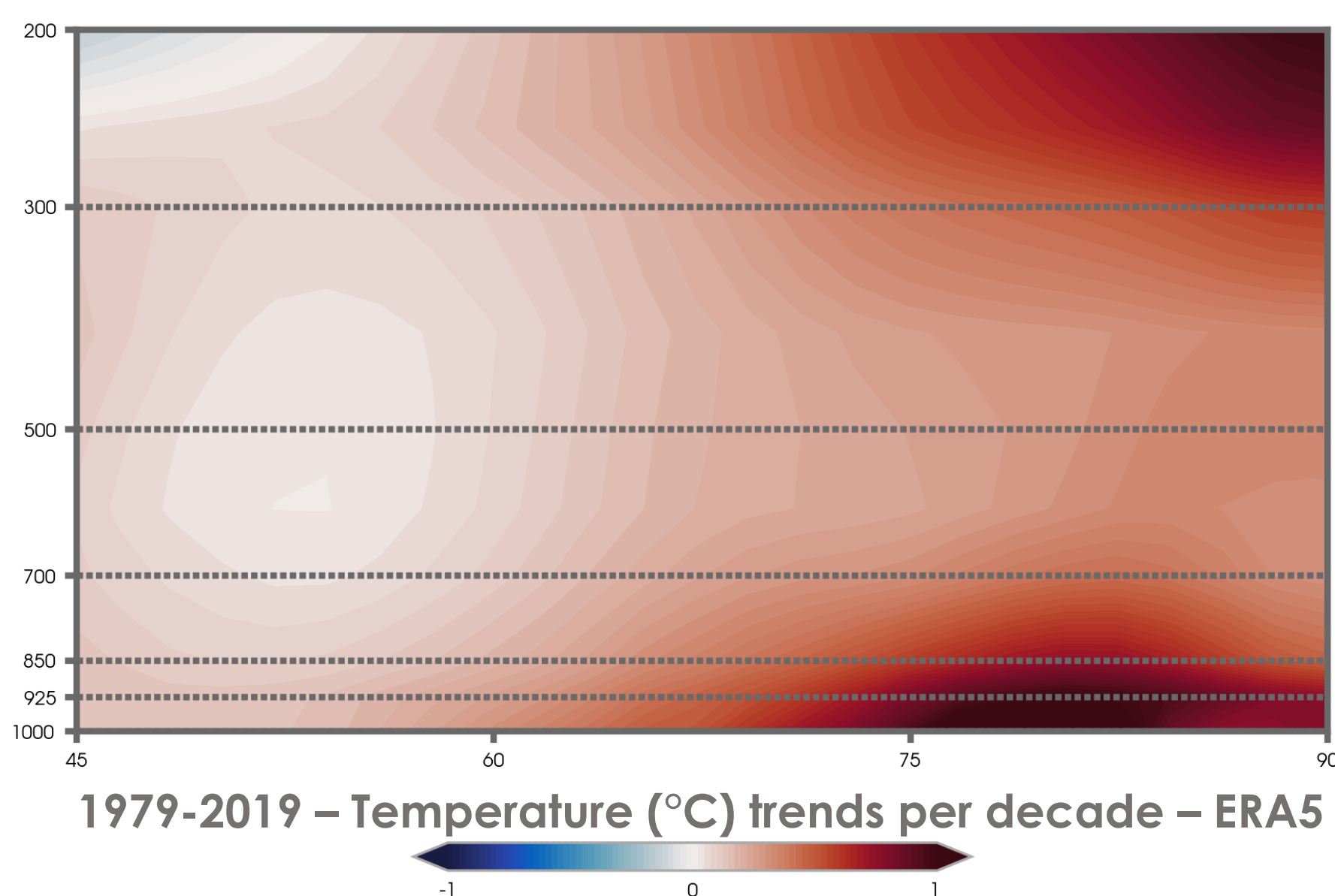
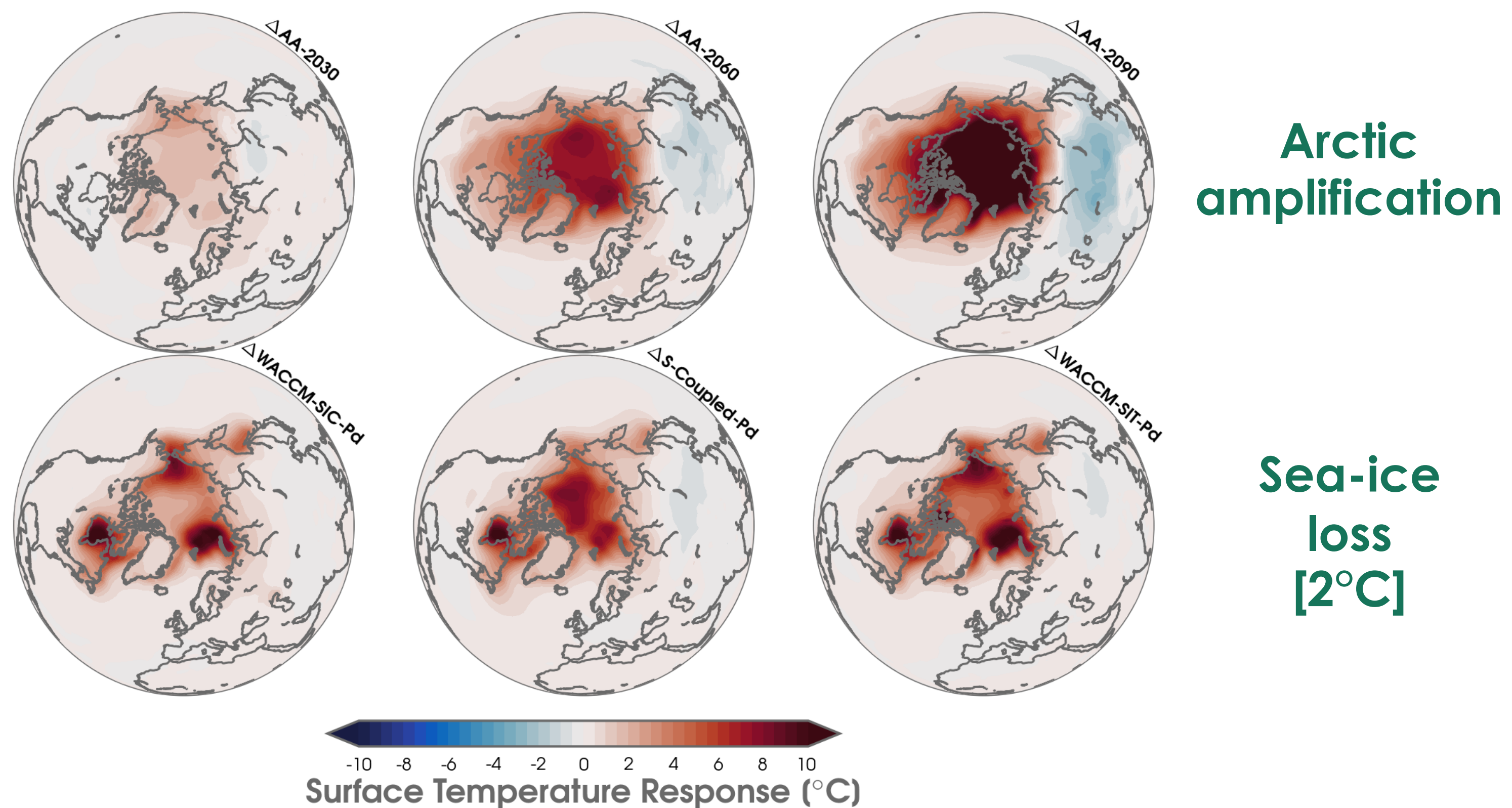


# GREATER SIBERIAN COOLING LINKED TO ARCTIC MID-TROPOSPHERIC WARMING



We find that the ‘warm Arctic, cold Siberia’ temperature anomaly pattern is closely connected to the vertical extent of warming in the Arctic mid-troposphere. While the experiments are idealized, our results further suggest the importance of simulating the total Arctic amplification effect (not just sea-ice loss) when evaluating Arctic mid-latitude linkages.

**Labe, Z.M.,** Y. Peings, and G. Magnusdottir (2020). Warm Arctic, cold Siberia pattern: role of full Arctic amplification versus sea ice loss alone, *Geophysical Research Letters*, DOI:10.1029/2020GL088583

## ZACHARY M. LABE

Department of Earth System Science  
University of California, Irvine

**CONTACT:** [zlabe@uci.edu](mailto:zlabe@uci.edu)

 @ZLabe

